



DC SERIES

# SWITCHING TRANSIENT FILTERS



## INTRODUCTIONS

1. Two-stage filters provide high insertion loss for both line-to-line and line-to-ground emissions throughout the frequency range.

## COMPONENTS

PART NO.	C1 (uF)	C2 (pF)	L1 (mH)	L2 (uH)	R (K Ω)
03DCCG5B/W5B	0.47	4700	9.8	160	470
06DCCG5B/W5B	1.0		7.8	110	220
12DCCG5B/W5B			3.25	50	
16DCCG5B/W5B/S5B			2.8	43	

## SERIES DIMENSIONS

PART NO.	DIMENSIONS IN INCHES/mm						
	A	B	C	D	E	F	G
03DCCG5B/W5B	2.95 75.0	3.34 84.8	2.05 52.0	2.58 65.6	1.54 39.2		
06DCCG5B/W5B	4.06 103.0	4.49 114.0	2.22 56.5	3.76 95.5	1.83 46.4		
12DCCG5B/W5B	5.63 143.0	6.02 152.9	2.05 52.0	5.30 134.7	1.78 45.3		
16DCCG5B/S5B/W5B	3.90 99.0	4.31 109.5	4.72 120.0	2.01 51.0	2.62 66.5	3.39 86.0	2.28 58.0

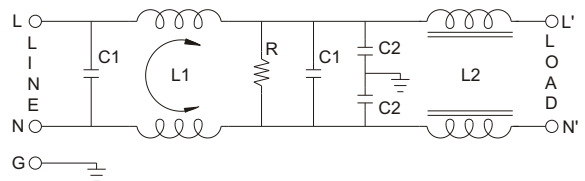
## MINIMUM INSERTION LOSS IN dB

COMMON MODE (L-G) IN 50 OHM SYSTEM							
CURRENT RATING	FREQUENCY-MHz						
	.15	.50	1.0	5.0	10	30	
3A	25	45	55	55	55	35	
6A	25	45	50	60	60	40	
12A	20	30	40	55	60	25	
16A	15	20	30	60	50	30	
DIFFERENTIAL MODE (L-L) IN 50 OHM SYSTEM							
3A	45	60	60	70	70	50	
6A	50	60	60	60	60	50	
12A	35	55	60	60	60	45	
16A	40	55	55	60	60	50	

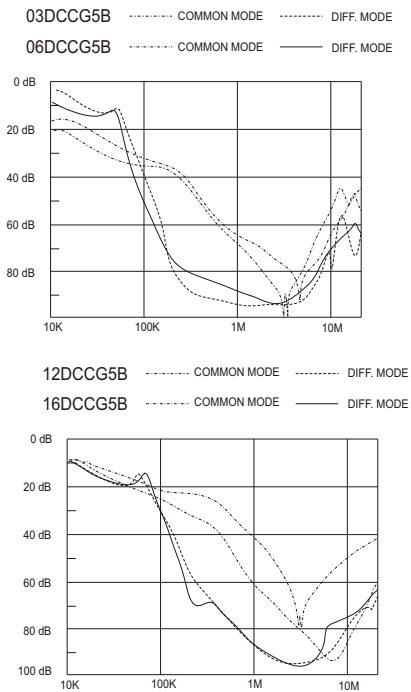
## SPECIFICATIONS

- Maximum leakage current each line-to-ground @ 115VAC 60Hz: 0.40mA  
@ 250VAC 50Hz: 0.80mA
- Hipot rating (one minute)  
line-to-ground: 2250VDC  
line-to-line: 1450VDC
- Operating frequency: 50/60Hz
- Rated voltage: 115/250VAC

## ELECTRICAL SCHEMATIC

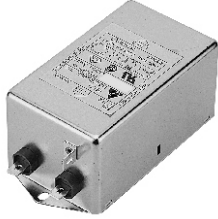


## INSERTION LOSS (TYPICAL)

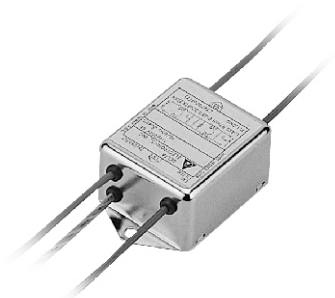
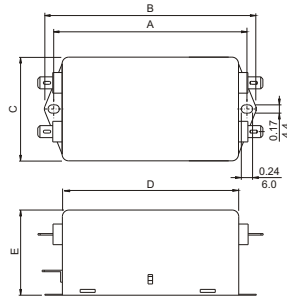


GENERAL PURPOSE TWO-STAGE FILTERS

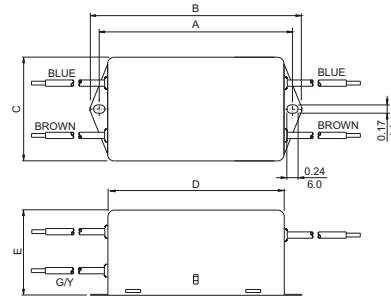
**MECHANICAL CONSTRUCTION**



CG5B



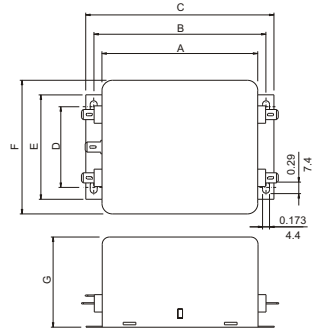
CW5B



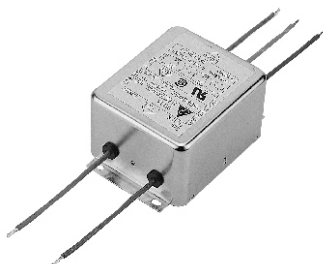
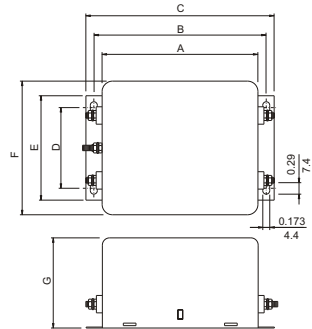
ALL WIRE LEADS 4.0" LONG MIN.



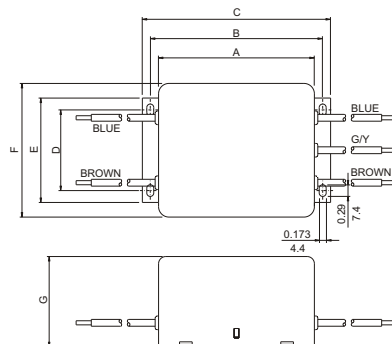
GG5B



GS5B



GW5B



ALL WIRE LEADS 4.0" LONG MIN.

UNIT:  $\frac{\text{INCH}}{\text{mm}}$